

STAS CLIPRAIL PICTURE HANGING RAIL

PD424A001 / PD424A002

The STAS Cliprail system is a wall-mounted picture hanging solution that allows you to hang and reposition artwork without drilling new holes. The rail is mounted using clips, and hanging cords can be inserted at any point along the rail.

To hang and construct rails, please see the full list of STAS installation components below:

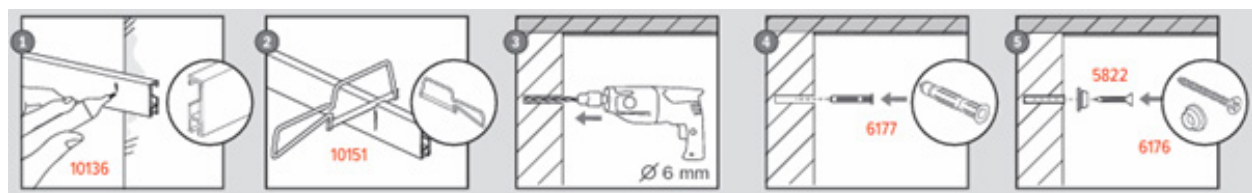
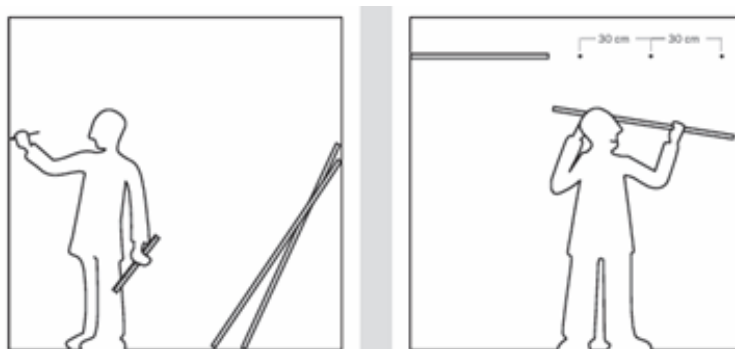
- Cliprail - Codes PD424A001/ PD424A002
- Fixing Buttons - Codes PD428A001/ PD428A002
- Joiners - Code PD427
- Screws and Wall Plugs - Codes PD429/ PD430
- End Caps - Code PD426
- Push-in Corners - Code PD425
- Cobra Suspenders - Codes PD431A001/ PD431A002/ PD431A003
- Adjustable Picture Hooks - Code PD432

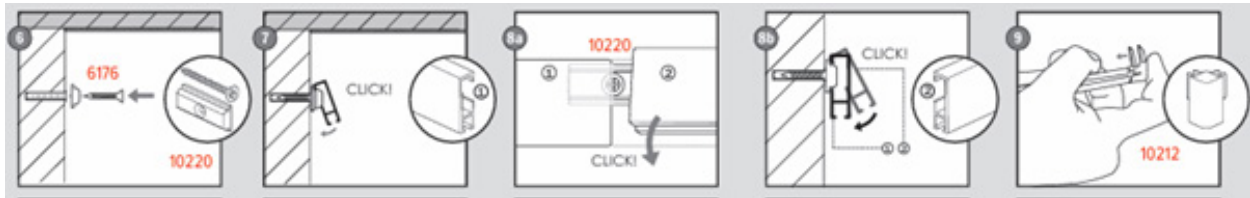
Preparation

Choose the installation height, we recommend drilled holes for fixings to be at a minimum 19mm below the ceiling. Ensure the wall surface is suitable (e.g. brick, concrete, plasterboard). Check for hidden pipes or cables before drilling. STAS Hanging Rails can be painted before or after installation or remain as is.

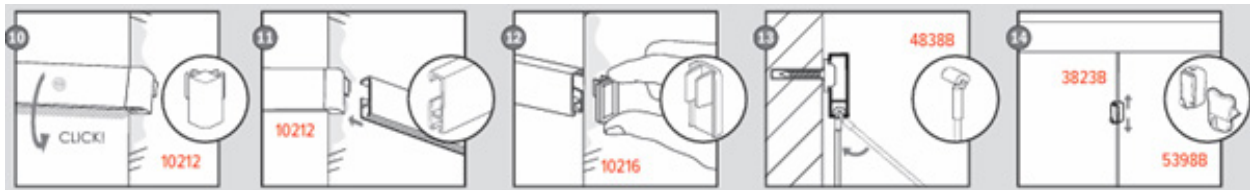
Installation Procedure

Mark out the installation line using a measuring tape and spirit level to draw a straight horizontal line along the wall. Measure the required length for the STAS Cliprail. If necessary, use a hacksaw to cut the rail to the desired length. Ensuring edges are smoothed after sawing. Maximum load: approx 20kg per metre. Mark intervals of 300mm and ensure even spacing for proper load distribution for fixing buttons positioning. Drill holes at each marked position. Insert wall plugs appropriate for your wall type. Align a fixing button with the drilled holes and secure firmly using screws. Verify alignment with a spirit level.





If using two or more rails for a larger display, place STAS Straight Joiners to wall for further support. Evenly place between the two rails meeting and slot into place. To attach the rail, position the rail over the mounted clips and press firmly until the rail snaps into place. If hanging rails are placed around corners, use STAS push-in corners to extend display. Attach STAS End Caps to both ends of the rail for a neat finish (if required).



STAS Cobra Suspenders can be inserted into the rail at any position. Hooks securely onto rail. Easily cut to required length. STAS zipper hooks slide onto perlon suspenders. These can be adjusted to placement, just squeeze side and release to lock. Zippers on perlon suspenders support approx 10kg frames.